



WILLAMETTE VALLEY
EQUINE

Veterinary Services

9130 SW Pioneer Ct, Ste E

Wilsonville, OR

PH 503.682.4426

www.WillametteValleyEquine.com

Equine Intramuscular Injections

Injection Procedure:

- Position yourself, the horse handler, and the horse safely
- Eliminate all air bubbles from the syringe
- Locate the injection site (see above)
- With the needle detached from the syringe, direct the needle into the muscle at a 90° angle, inserting all the way up to the needle hub (See figure 5.)
- Connect the syringe to the needle hub and pull back on syringe to check for blood
- If blood is found remove the needle and try again in slightly different spot

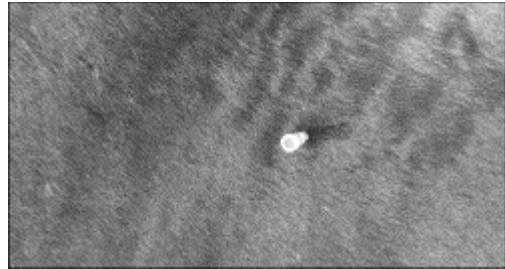


Figure 5.
Insert the needle all the way up to the hub.

Injection Sites:

Lateral Neck

There is a triangular area safe for IM injection on either side of the neck located above the vertebrae, below the nuchal ligament, and in front of the scapula. (Refer to figures 1 and 2.)



Figure 1.

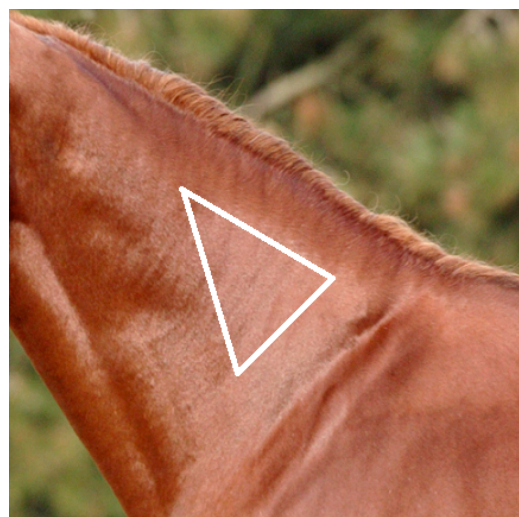


Figure 2.

The white triangles in the above pictures show the appropriate area for IM injections in the neck.

Hamstrings

There is also a large muscle in a horse's hind leg called the hamstring which is safe for IM injections. This area is located below the tuber ischium bones and above the achilles tendon (groove) in either hind leg. (Refer to figures 3 and 4.)

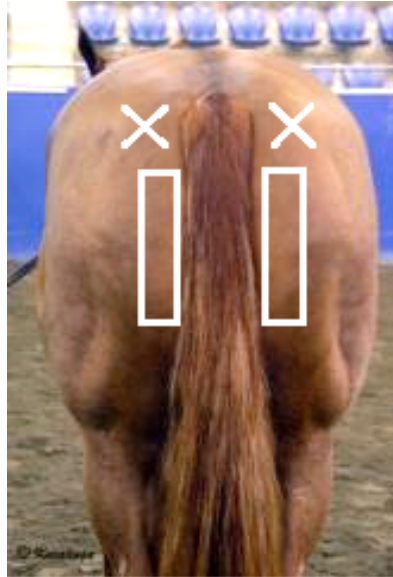
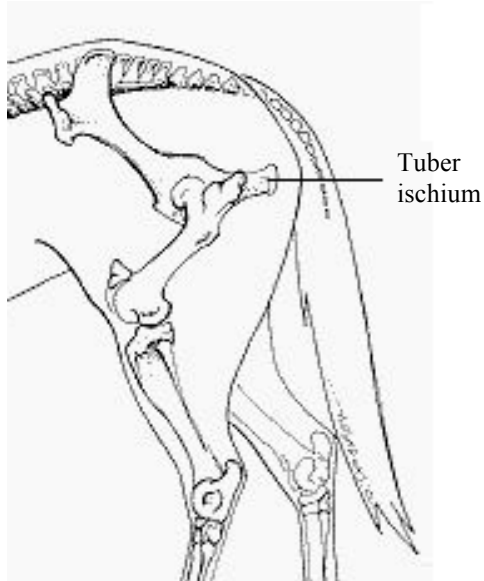


Figure 3.

Figure 4.

The white squares in figure 4 show the appropriate area for IM injections in the hamstrings. The "X" marks each point of the tuber ischium.